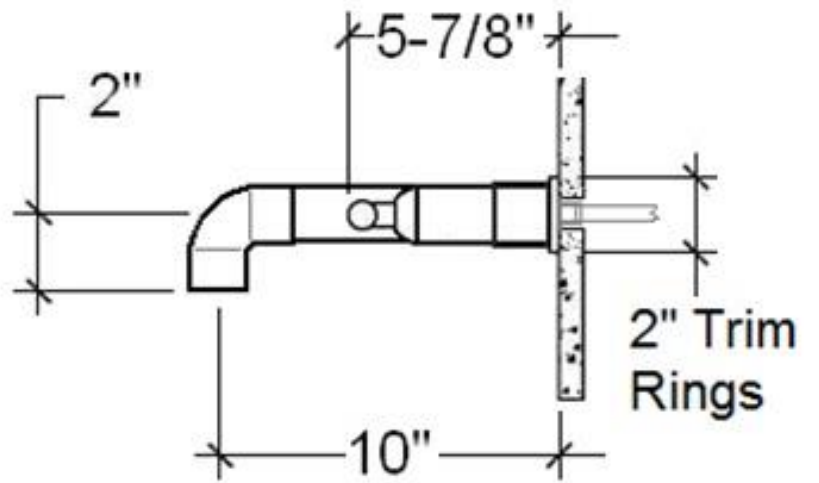
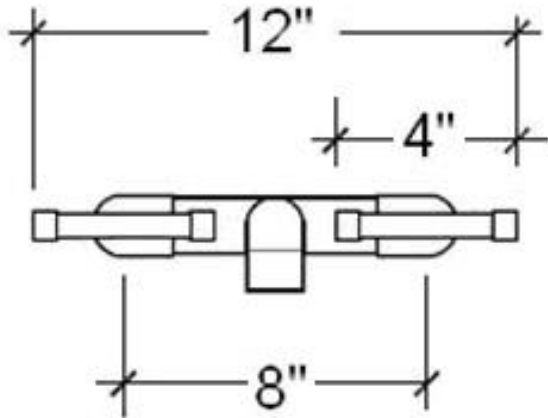




INSTALLATION GUIDE

Waterbridge Wall Faucet with Elbow Spout

Aug 2019



- ADA Compliant
- Offset and Cross handles available
- Custom sizes and finishes available

Connection	1/2" Copper



INSTALLATION GUIDE

Waterbridge Wall Faucet with Elbow Spout

Aug 2019

- 1) Determine the desired height for the faucet.
- 2) Install a copper support bracket securely in the wall.
Another manufacturer's bracket may be used, for 1/2" copper at an 8" spread.

NOTE: There should be at least 1/2" between the support and inside of finished wall.

COPPER SUPPORT BRACKET INCLUDED WITH FAUCET:



- 3) Cut the copper lines down to between 3/4" and 1" from the finished wall.
- 4) Carefully slide the sleeves toward the face of the faucet, exposing the compression nuts. Remove the nuts, being careful not to lose the ferrules.
- 5) Install the trim rings, nuts, threaded seats, then the ferrules, over the copper lines.

NOTE: The threads on the seats serve no function in this application.

FAUCET, TRIM SLEEVE, FERRULE, THREADED SEAT, COMPRESSION NUT, TRIM RING, MOUNTING TEMPLATE:



- 6) Supporting the faucet, tighten the compression nuts onto the back of the faucet. If the copper supply lines need to be trimmed, remove the faucet and return to step #3.
- 7) Water test for leaks.
- 8) Gently slide the sleeves back over the compression nuts and against the trim rings.